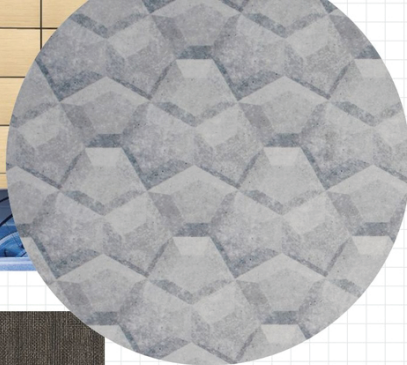
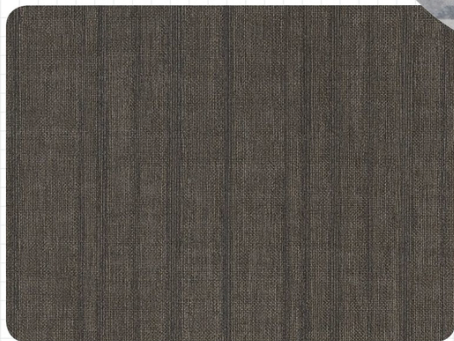




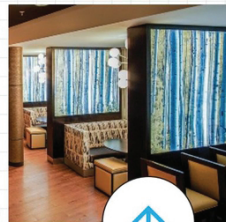
[6]



[7]



[8]



[9]



[6] Treefrog's White Oak Groove is the latest addition to its Groove Collection, which features 11 veneers with a deeper, more textured surface. It is a straight grain that's prefinished with a laminate backer for installation ease.

treefrogveneer.com

[7] The EchoPanel Mura Fabric Collection from Kirei is a wallcovering series made of 60 percent recycled PET that absorbs sound and adds dynamic design to nearly any flat surface. Mura comes in 14 prints and 14 solid colors.

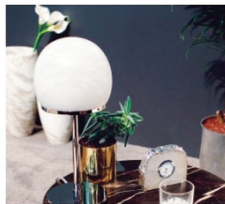
kireiusa.com

[8] Innovations in Wallcovering's new collection took inspiration from existing wallcoverings, developing vinyl alternatives that make biophilic design more accessible. Embossed, Type II vinyl Mangrove offers the natural look of linen.

innovationsusa.com

[9] ATI Decorative Laminates' Lumi-Splash is the first ultra-thin, lighted laminate system with no air gap required for LEDs. Users can choose single- or double-sided designs, standard or RGB LED Light Changing Systems and a variety of framing options.

atilaminates.com



Witness the evolution of the International platform for luxury design. Celebrating 30 years of what's best and what's next.

May 20 - 23, 2018 | Jacob Javits Center, New York, NY
Register to attend at www.icff.com

