

Chemetal

chemetal.com

The **Glowing Metals** series offers 36 various motifs featuring warmer, richer metals and textured patterns. This company specializes in metal designs and laminates fit for vertical retail applications.



Impact Specialties

impactspecialties.com

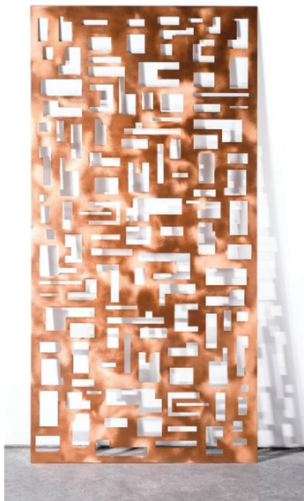
Made with a real stone surface, **Arterra Decorative Wall Panels** replicate the masonry aesthetic without paying for the material costs or installation time. High quality and durable, choose unique designs from the four available collections.



Christine Taylor Collection

christinetaylorcollection.com

Vacuum Formed Panels transform any wall in a matter of minutes. Peel and stick for easy installation, the 19.75-in. square styrene panels come in a variety of colors and styles.



Móz Designs

mozdesigns.com

Available in 12 standard patterns, the **Laser Cut** collection can be customized into desired shapes and sizes to control the flow of light through the cutouts in the material.



Circle Visual

circlevisual.com

Shown here for the Sam Edelman collection at Lord & Taylor, **Tufted Wall Panels** create depth and dimension for any space using fabrics.

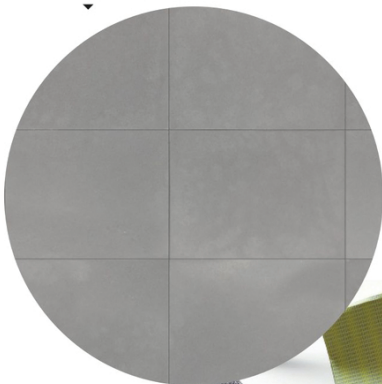
LOOK
BOOK

47

MDC

mdcwall.com

Intended for luxury interiors, this company's release of the **Platinum Series Unique Effects Collection** introduces 10 new patterns of wallcoverings made from high-styled materials.



Carnegie

carnegiefabrics.com

Inspired by modern athletic apparel, the upholstery collection **PFRM** comes in seven patterns playing with gray hues and vibrant accent colors to deliver function, comfort and durability through high-performance materials and technology.



Treefrog

treefrogveneer.com

Available in 4-by-10-ft. sheets, the **White Oak Groove** veneer is a prefinished, straight grain accompanied by a laminate backing for easy installation. Sourced from Italy, the veneers have a deep, textured surface.



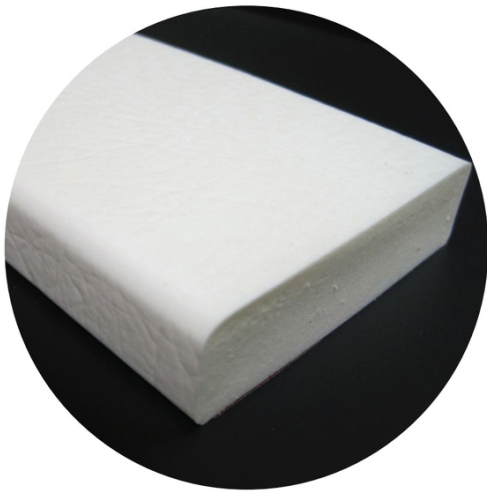
Kirei

kireiusa.com

With high ceilings in mind, customizable **EchoCloud** acoustic units absorb sound and reduce reverberation for a range of ceiling types. Available in different shapes, styles, and colors, clouds augment ceiling design while hiding high fixtures.

LOOK
BOOK

43

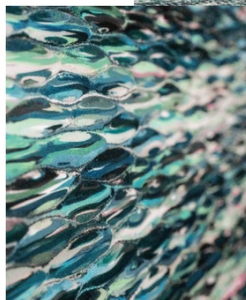


▲ **American Permalight Inc.**
americanpermalight.com

Say goodbye to bumps and bruises from chairs on walls and new paint jobs with **White Safety Padding**. Used as an adhesive along walls and straight surfaces, the 2.9-in.-wide, 0.8-in.-thick polyurethane foam gently bounces back from impact.

Interior Arts
chemetal.com

This company's **Cracked Cement** laminate collection features industrial-like textures in gray hues reminiscent of hardened cement. The high-pressure, 4-by-6-ft. laminates fit furniture, casegoods and shelving needs.



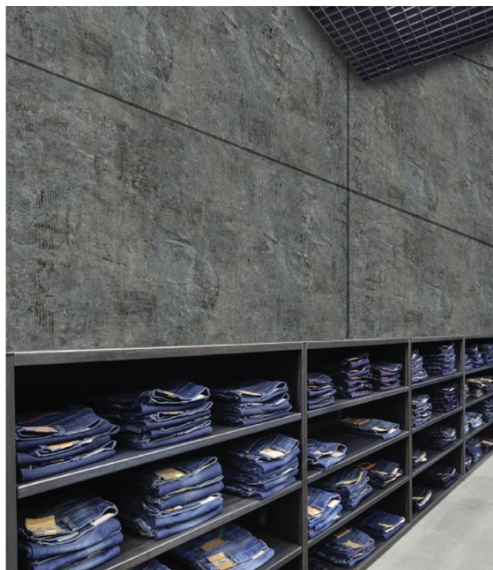
Forms + Surfaces

forms-surfaces.com

Each design of the 12 versions available for the **BermanGlass Levels Kiln Cast Glass** collection pairs artisanal glass textures with colorful or graphic interlayers to reflect and refract the light captured on its surfaces.

**LOOK
BOOK**

45



Architectural Systems Inc.

archsystems.com

With an industrial look, **Swick Natural Wall Coverings** are lightweight, flexible veneers made of a two-part polymer-mineral powder system fixed to a fiber-weave backing. Handmade, these surfacing materials easily install onto curved or straight walls.